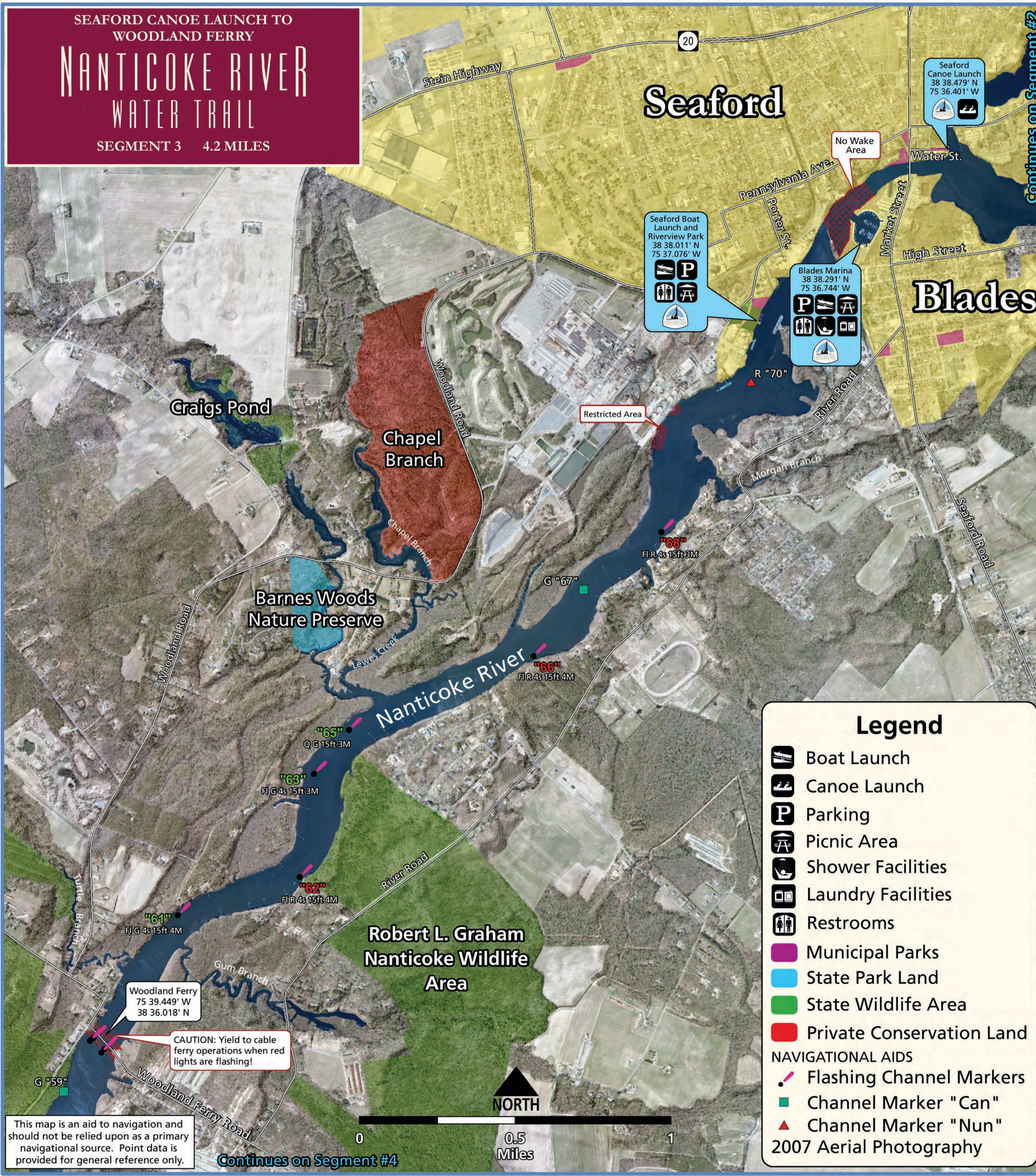


# NANTICOKE RIVER WATER TRAIL

SEGMENT 3 4.2 MILES



**Seaford**

**Blades**

**Chapel Branch**

**Barnes Woods Nature Preserve**

**Robert L. Graham Nanticoke Wildlife Area**

**Nanticoke River**

Seaford Boat Launch and Riverview Park  
38 38.011° N  
75 37.076° W

- Boat Launch
- Canoe Launch
- Parking
- Picnic Area
- Shower Facilities
- Laundry Facilities
- Restrooms

Blades Marina  
38 38.291° N  
75 36.744° W

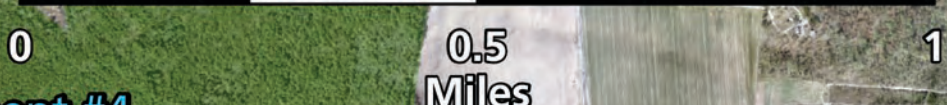
- Boat Launch
- Canoe Launch
- Parking
- Picnic Area
- Shower Facilities
- Laundry Facilities
- Restrooms

Seaford Canoe Launch  
38 38.479° N  
75 36.401° W

- Boat Launch
- Canoe Launch

Woodland Ferry  
75 39.449° W  
38 36.018° N

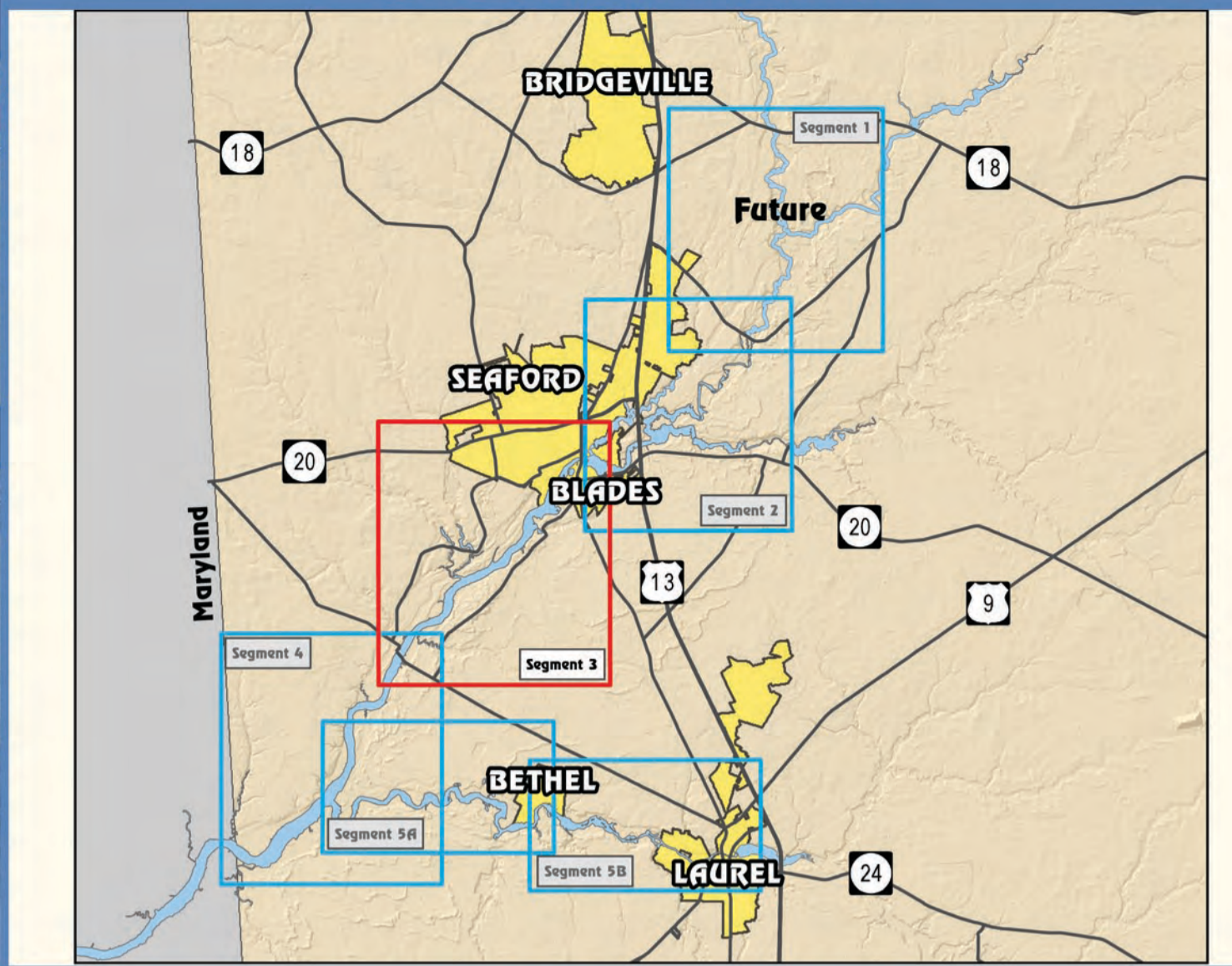
CAUTION: Yield to cable ferry operations when red lights are flashing!



Continues on Segment #4

Continues on Segment #2

## OVERVIEW MAP



## PADDLING CHECKLIST

- File a Float Plan with a Friend
- Life Jacket
- Whistle
- Map and Compass
- GPS (recommended)
- Bailer or Bilge Pump
- Emergency Contacts
- Extra Paddle
- First Aid Kit
- Dry Bag with Extra Clothing
- Sunscreen and Bug Repellent
- Cell Phone
- Drinking Water (one gallon/person/day)

## WATER ACCESS AREAS

WATER ACCESS AREA	PARKING	HAND CARRY LAUNCH ONLY	BOAT RAMP	PIER OR TIE-OFF	RESTROOMS
Seaford Boat Launch	Yes	No	4	Yes	Yes
Seaford Canoe Launch	Limited	Yes	1	No	No
Blades Marina	Yes	No	1	Yes	Yes

Public access areas are designated with the Captain John Smith National Historic Trail Logo

## PADDLING THE RIVER

Segment 3 begins at the City of Seaford and continues to the historic Woodland Ferry. The river along this portion of the trail is wide making it susceptible to high winds and strong currents. Paddlers should check the weather forecast and tides before launching. At times the river in this section can be congested; paddlers are urged to remain close to the shoreline and out of the main channel. During peak summer weekend periods, paddlers are likely to encounter recreational power boaters, fishermen, and jet skis in addition to year-around commercial barge traffic. Kayaks and

canoes can be difficult for larger boats to see. Please respect private property. Remember that State Wildlife Areas and other marked rest areas are the only lands open to public access. During the fall months, the Nanticoke Wildlife Area and the River are open to a variety of hunting activities. Be courteous and respectful of others enjoying the magnificent Nanticoke River Watershed. For more information about the Nanticoke River Water Trail including regional information, visit [www.paddletheNanticoke.com](http://www.paddletheNanticoke.com).

## LEAVE NO TRACE OUTDOOR ETHICS

**KNOW BEFORE YOU GO**  
Be prepared! Don't forget clothing to protect you from heat, cold, and rain. Remember to bring a map that covers the area you will be exploring. Read books and talk to people before you go.

**LEAVE WHAT YOU FIND**  
Leave plants, rocks, and historical items as you find them so the next person can enjoy them.

**RESPECT WILDLIFE**  
Observe animals from a distance and never approach, feed, or follow them.

**TRASH YOUR TRASH**  
Pack it in, pack it out. Put litter, even crumbs in trash cans or carry it home. **KEEP WATER CLEAN.** Do not put soap, food, or waste in lakes, streams, or rivers.

**BE KIND TO OTHER VISITORS**  
Make sure the fun you have in the outdoors does not bother anyone else. Remember that other visitors are there to enjoy the outdoors. Listen to nature. Avoid making loud noises or yelling. You will see more animals if you are quiet.

### Legend

- Boat Launch
- Canoe Launch
- Parking
- Picnic Area
- Shower Facilities
- Laundry Facilities
- Restrooms
- Municipal Parks
- State Park Land
- State Wildlife Area
- Private Conservation Land

### NAVIGATIONAL AIDS

- Flashing Channel Markers
- Channel Marker "Can"
- Channel Marker "Nun"

2007 Aerial Photography

This map is an aid to navigation and should not be relied upon as a primary navigational source. Point data is provided for general reference only.